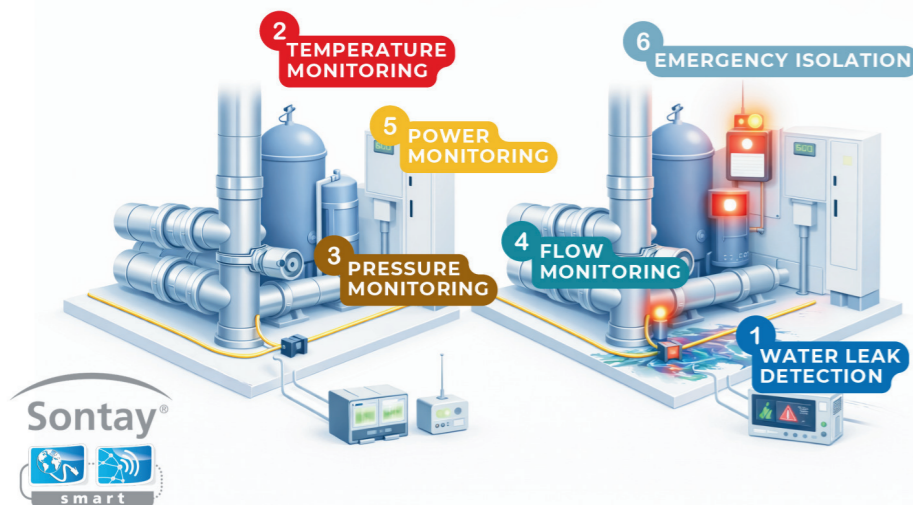


Protecting against Water Damage

Early leak detection and emergency response for critical environments.

SCAN HERE



Sontay Water Detection & Emergency Products. Water detection and emergency products help protect buildings and equipment from leaks and water ingress. Early detection enables rapid response, reducing damage and downtime. Reliable monitoring is essential in areas where leaks may go unnoticed.

Applications

- Plant and boiler rooms
- Data and server rooms
- Mechanical and electrical rooms
- Underfloor and raised floors
- Pipework, valves, and pumps

Water Detection

Early leak identification using point sensors and detection cables to prevent escalation.

Emergency Response

Supports local alarms and system alerts for fast intervention or shutdown.

Monitoring & Protection

Provides continuous monitoring in high-risk areas to support safety and operational resilience.

System Integration

Integrates with building management and alarm systems for clear indication and coordinated response.

	Product Code	Applications	
1	WD	Water leak detection (point & cable)	
2	TT	Temperature monitoring in plant areas	
3	PA-DP	Pressure monitoring for system integrity	
4	FS-W	Flow monitoring to detect abnormal conditions	
5	PM-CT / PM-EM	Power monitoring for critical equipment	
6	VA / VZ	Emergency isolation via valves or actuators	



LEAK DETECTION

- Point & cable-based monitoring
- Early warning of water ingress



EMERGENCY ALERTS

- Local alerts & system indication
- Supports emergency actions



SYSTEM PROTECTION

- Reduces downtime & repair costs
- Protects equipment and infrastructure

EP-SW Emergency Stop Buttons

EP-KL



The EP-SW range of emergency stop buttons are for manual close down of gas systems in the event of fire or other emergency they are usually located at exits to gas plant rooms. All units are 'push' to activate a latching switch, which is released by either a 'twist' or 'key'. The main housing is bright yellow with red push button for easy identification. The units are fitted with one contact switch.

SPECIFICATION

Reset type	Key
Switch rating	15 to 41Vac, 4A. 13 to 110Vdc, 0.5A
Weight	220g

EP-SW-11



The EP-SW-11 is for use in gas safety circuits. Units consist of a ventilated high temperature glass filled resin case, with electrical connection terminals and a thermal fuse. The fuse is manufactured to fail at 72°C thus causing an open circuit between the two terminals. Replacement fuses are available

Part code	Description
EP-KL	Stop Button - Key lock
EP-SW-11	Stop Button - Twist Knob

EP-SW-72 Fusible Thermal Link



SPECIFICATION

Dimensions	62.5 x 62.5 x 41mm
Entry	20mm Diameter
Gross Weight (kg)	0.04
Housing	High temperature flame retardant glass filled resin
Melting Point	72°C
Protection	IP20
Rating	250Vac @ 5A
Weight	60g

FEATURES

- Fast acting thermal fuse @ 72°C
- Easy access to terminals and thermal fuse

Part code	Description
EP-SW-72	Electro-Thermal Link
EP-SW-72-F	Electro-Thermal Link-spare fuse

EP-FS Fireman's Switches



SPECIFICATION

Conformity	LVD, CE & UKCA Marked
Connections	4x 100mm flying Leads
Country of origin	UK
Gross Weight (kg)	0.18
Operating Range	-20 to +55°C
Switch rating	2A @ 250Vac
Dimensions (mm)	87 x 87 x 52mm
Keys	2 supplied (removable in all positions)

Part code	Description
EP-FS-1	Firemans Switch Red 2 Position
EP-FS-2	Firemans Switch Red 3 Position

The EP-FS are a range of safety switches for use in the event of fire or other emergency. Usually they are located at exits to gas plant rooms. Units are key operated with a 2 or 3-position switches. The key is removable in all switch positions.

FEATURES

- 2 or 3 Position switches
- 2 keys supplied
- Key removable in all positions

Data sheets online: www.sontay.com

WD Water Leak Detection

The WD-x range are designed to detect water leaks either at localised points using the WD-PS point sensor or larger areas with the WD-CS cable sensor. The surface of the WD-RS rain sensor can be heated to avoid false detection alarms resulting from dew forming, the detector can be swivelled on the mounting bracket and is held in place by a wing nut. All these sensors must be used with the WD-AMX range of modules and should not be directly connected to a BMS controller. As the cable excitation used is an isolated AC signal which ensures the detector cable will not be subject to oxidation or erosion over time, avoiding the degradation problems associated with DC systems.

FEATURES

- WD-CS is easy to lay and detects along its entire length
- More than one WD-CS or WD-PS can be connected to a WD-AMX
- Self-contained heater to avoid nuisance alarms of WD-RS
- Detects water leaks under floors or isolated plant rooms
- Rain detector to automatically close windows

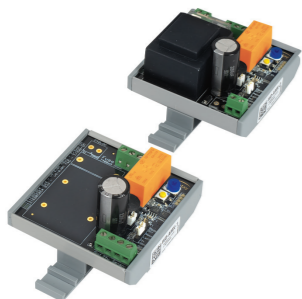
SPECIFICATION

Ambient relative humidity	0 to 80% RH non-condensing
Ambient Temperature Range	0 to 40°C
Audible alarm	85db @ 2.3kHz at 10cm
Maximum cable run	200m - including detection cable
Output	SPDT relay 12A @ 230Vac
Power Supply	24Vac/dc ±10%
Protection	IP30
Supply Current	50mA max
Weight	100g

Part code	Description
Modules	
WD-AMX-1	24Vac/dc Controller with buzzer
WD-AMX-2	230Vac Controller with buzzer
Sensors	
WD-CS-2M	Water Cable Sensor, 2m cable, 3m leader
WD-CS-5M	Water Cable Sensor, 5m cable, 3m leader
WD-CS-10M	Water Cable Sensor, 10m cable, 3m leader
WD-CS-15M	Water Cable Sensor, 15m cable, 3m leader
WD-CS-20M	Water Cable Sensor, 20m cable, 3m leader
WD-CS-25M	Water Cable Sensor, 25m cable, 3m leader
WD-PS	Water Point Sensor, 2m
WD-RS	Rain Sensor with internal heater, 2m leader
WD-RS-5M	Rain Sensor with internal heater, 5m leader
Accessory	
WD-FC	Pack of 20 fixing clips for WD-CS

Note: Other WD-CS lengths available.

WD-AMX



WD-CS



WD-PS

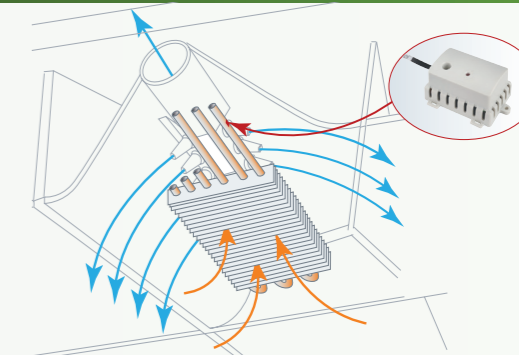


WD-RS



WD-CPS Condensation Prevention Sensor

Sontay's Condensation Prevention sensors provide the closest safeguard of condensation as it calculates the actual dewpoint based on the ambient relative humidity and the temperature of the surface.



A condensation prevention sensor can give early indication of the onset of condensation so that preventative action can be taken. >>>

WD-CPS CONDENSATION PREVENTION SENSOR



SPECIFICATION

VFC Output	24Vac/dc @ 1A resistive SPDT
Current Output	Dry<3mA, wet>12mA
Power Supply	24Vdc ±5% or 24Vac ±10%, 20mA max. current draw
Cable Dimensions	2 meters
Mounting Plate	Stainless steel
Dimensions	73 x 48 x 30mm
Weight	80g

FEATURES

- Microcontroller based for reliable condensation prevention control
- Switches its output at the actual dewpoint
- Adjustable switching point
- LED indication

Sontay's range of condensation prevention and detection devices are designed to provide a switched output signal to detect or even prevent the onset of condensation on chilled surfaces such as chilled beams. All devices come with 2m cable length and are mounted to chilled surfaces using screws or heavy-duty nylon straps. The WD-CPS Condensation Prevention Sensor provides the closest safeguard of condensation as it calculates the actual dewpoint based on the ambient relative humidity and the temperature of the surface. The user can even adjust the switching point within a range of ±3°C of the dewpoint. It also outputs the measured level condensation using a 4-20mA control signal and gives additional LED indication on its status.

Part code	Description
WD-CPS	Condensation Prevention Sensor - 2m Lead
WD-CPS-5M	Condensation Prevention Sensor - 5m Lead

WD-CPS-UN CONDENSATION PREVENTION SWITCH



SPECIFICATION

Output	VFC 24ac/dc @1A resistive SPDT
Power Supply	24Vdc ±5% or 24Vac ±10%, 20mA max. current draw
Cable Dimensions	2 meters
Mounting Plate	Stainless steel
Dimensions	73 x 48 x 30mm
Weight	80g

FEATURES

- Microcontroller based for reliable condensation prevention control
- Switches at 85% RH

The WD-CPS-UN Condensation Prevention Switch monitors the relative humidity and changes the state of the VFC to prevent "indoor rain" at a fixed set point and before it causes any damage to the building structure. It is a very cost effective solution to protect buildings and assets from any condensation.

Part code	Description
WD-CPS-UN	Condensation Prevention Switch - 2m lead

Data sheets online: www.sontay.com

Data sheets online: www.sontay.com